

CERTIFIED LAND CORNER RECORDATION

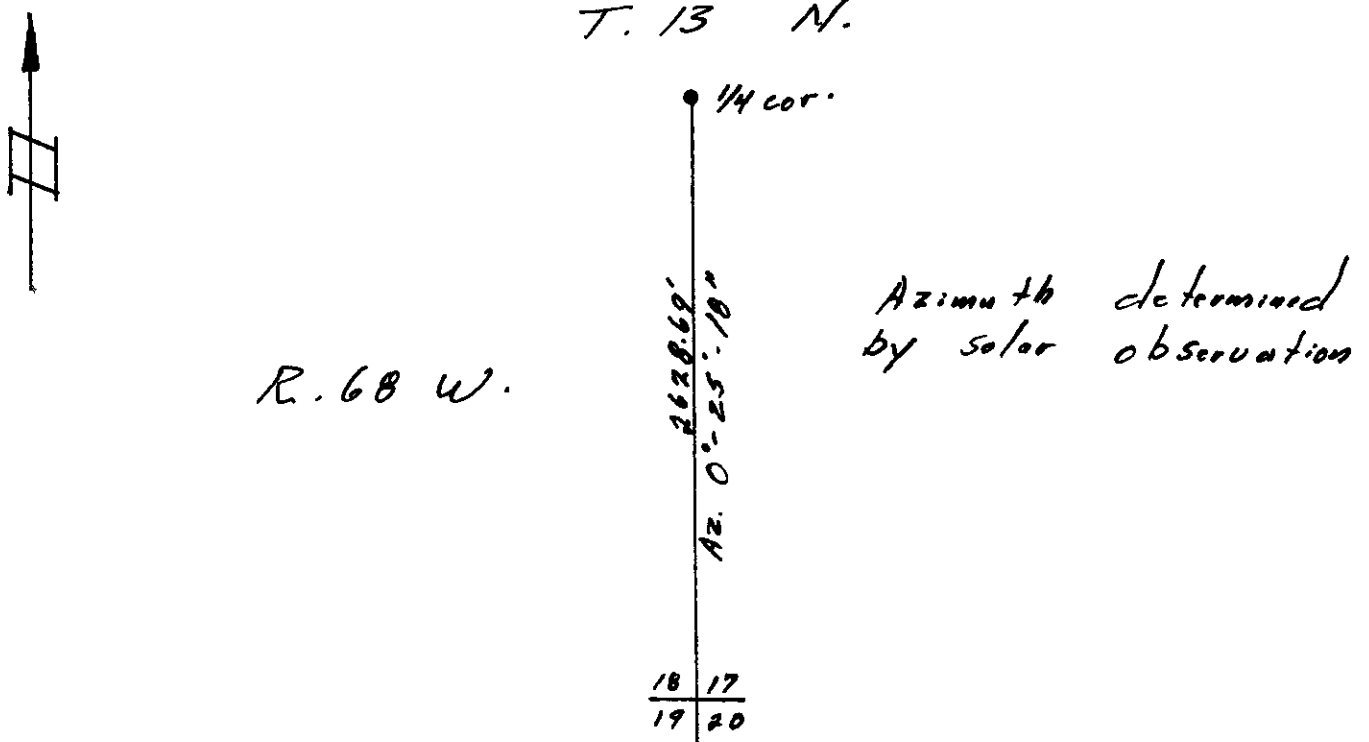
DESCRIPTION OF CORNER EVIDENCE FOUND, AND ORIGINAL RECORD (If known)

Section Corner $\frac{18}{19} | \frac{17}{20}$ T. 13 N., R. 68 W.
 Found well set granite stone with 5 marks on East
 & 3 marks on South

DESCRIPTION OF MONUMENT AND ACCESSORIES ESTABLISHED
 TO PERPETUATE THE ORIGINAL LOCATION OF THIS CORNER:

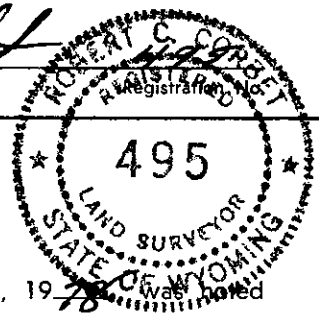
Left stake & slab @ corner - Open prairie - 1200' S.W. of
 Warren livestock Co. Strip mill well

SKETCH, WITH COURSE AND DISTANCE TO ADJACENT CORNER IF DETERMINED IN THIS SURVEY.
 (May Sketch or Paste Reproduction on Reverse Side.)



I, Robert C. Corbet certify that I have carefully performed or reviewed the work done on the diagrammed corner as reported on this recordation form and approve the same.

Robert C. Corbet
 Signature of Surveyor



STATE OF WYOMING,
 Office of Clerk and Recorder,
 County of Saramie

496611

This "corner record" was filed for record on the 22 day of August, 1978, was noted on the cross-index plat and is assigned page No. _____, in book No. _____.

James C. Whitehead
 County Official

Cross Index No. _____	T. _____	R. _____	Mer. _____
<u>N-5</u>	T. <u>13</u>	R. <u>68</u>	Mer. _____
_____	T. _____	R. _____	Mer. _____
_____	T. _____	R. _____	Mer. _____
_____	T. _____	R. _____	Mer. _____
_____	T. _____	R. _____	Mer. _____
_____	T. _____	R. _____	Mer. _____

N-5 13-68

306611

✓

Photographed

Indexed *BY*

Posted *✓*

Assessor _____